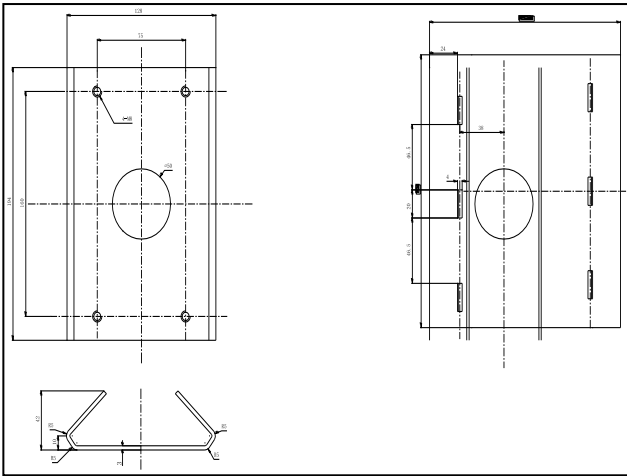
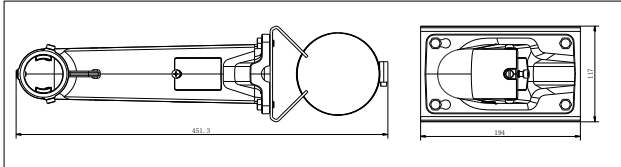


## DS-1602ZJ-pole

Vertical Pole Mount Bracket



### Dimension:



### Order model:

DS-1602ZJ-pole

### Parameters:

Model	DS-1602ZJ-pole
Parameter	Vertical Pole Mount Bracket
Color	Hikvision white
Feature	Suitable for speed dome pendent mounting
Material	Aluminum & Steel
Dimension	117×194×451.3mm
Weight	2040g

### Notice:

- The bracket should be installed on plat wall
- The bracket is suitable for vertical pole mount of 67-127 mm diameter
- Load capacity of pole should be more than 3 times the weight of camera and bracket  
Load capacity of clamp is 30KG

**Note:** The actual bracket may vary from the picture above.